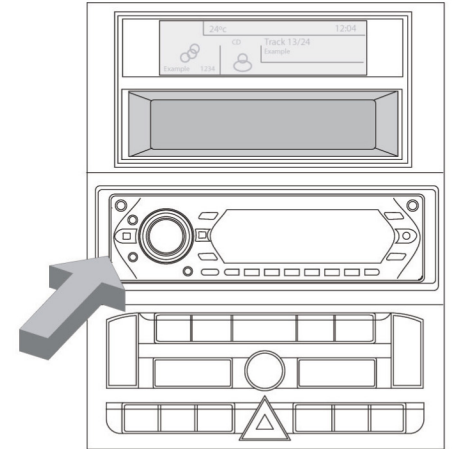
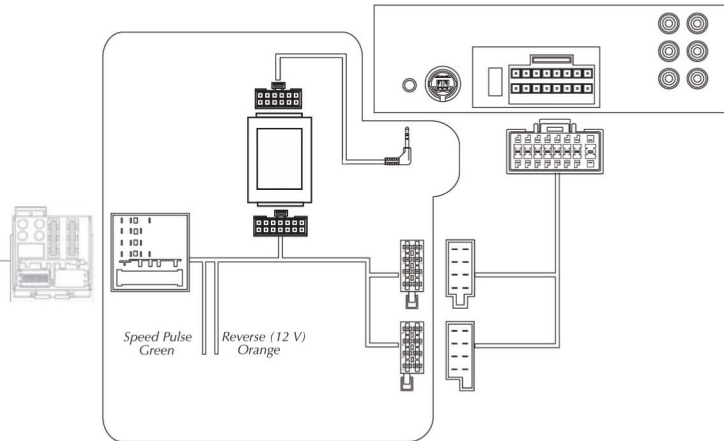
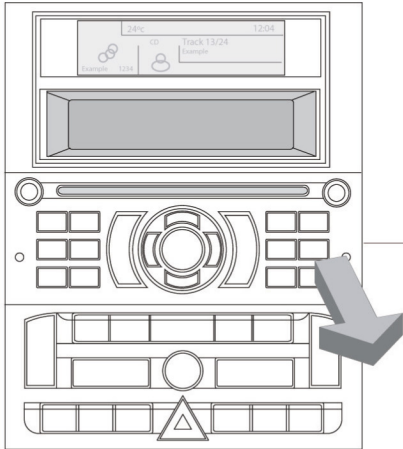


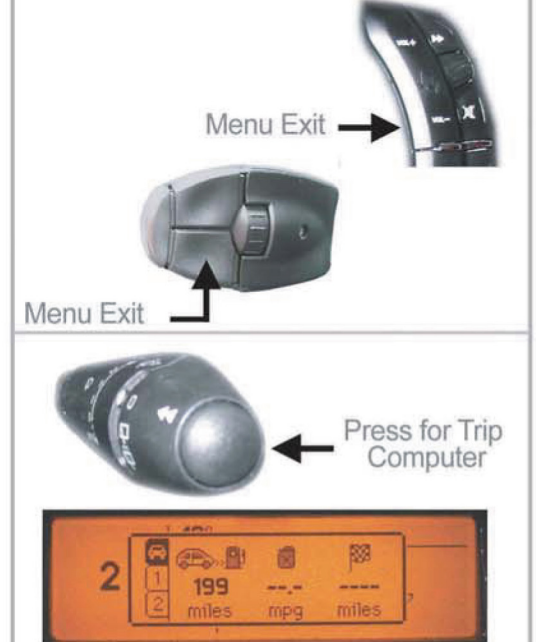
# INSTALLATION INSTRUCTIONS

## ASC2503

Stalk interface Citroen Quadlock CAN Bus



### Board Computer / System Settings



New MENU Navigation



New MENU Navigation



If the vehicle you have will not let you change the selected item, do the following:  
Firstly enter MENU mode as described on previous page.

### Peugeot

1. Once in MENU mode HOLD SOURCE BUTTON for 3 seconds.
2. After 3 seconds the display will return to radio mode to acknowledge you have held the button.
3. Now the roll wheel can be used to increment / decrement the selected item.
4. Once power has been removed from the interface, it will default back to its original settings.

### Citroen

1. Once in MENU mode HOLD ATT BUTTON for 3 seconds.
2. After 3 seconds the display will return to radio mode to acknowledge you have held the button.
3. Now the roll wheel can be used to increment / decrement the selected item.
4. Once power has been removed from the interface, it will default back to its original settings.