



# M3

## Marine Coaxial Speakers

### POSITION:

High-performance sound, engineered for real marine duty, with optional integrated RGB lighting.

#### Full-Range Coaxial Systems:

##### **NEW! M3-650X (universal fit mounting flange):**

6.5-inch coaxial system with 0.75-inch (19 mm) marine silk dome tweeters, 60W, 4 ohms

##### **NEW! M3-770X:**

7.7-inch coaxial system with 0.75-inch (19 mm) marine silk dome tweeters, 70W, 4 ohms

|   |   |
|---|---|
|  |  |
| Sport - Gloss White   | Sport - Gunmetal  |
|  |   |
| Classic - Gloss White   |   |

### TECHNOLOGIES

**MARINE**  
TESTED DESIGN



### SELLING POINTS:

#### #1 Truly Engineered for Marine Duty

- To ensure long-term performance, all models are designed and built to exceed industry standards for salt-fog and UV exposure. These are saltwater-rated products that you can use with confidence.

#### #2 Outstanding Sound Quality

- Acoustically engineered to produce powerful, smooth sound in real-world, open-air, marine environments.
- Long-excursion, high-efficiency woofers and treated silk dome tweeters deliver superior output capability with clear, high frequency detail.
- Integrated 2nd order, high-pass filter on tweeters, with solid-state protection circuit to minimize the possibility of tweeter failure.
- M3-650X features a wide mounting flange design to maximize retrofit installation compatibility

#### #3 Versatile Power Requirements

- Suitable for use with standard marine head-unit power.
- Designed to benefit with quality amplification, such as the JL Audio marine amplifiers.

#### #4 Choose Your Look

- Available in two grille styles: "Classic" or "Sport", both in Gloss White. Sport models are also available in a sleek, all Gunmetal finish.
- Allows you to match the look of the speakers to the theme of the boat interior.

#### #5 Built-In RGB LED Lighting (Optional Feature)

- Available on Sport grille models, multi-color LEDs are embedded within each speaker grille to produce vibrant accent lighting.
- Choose from seven fixed-wiring lighting colors or connect a lighting controller accessory (sold separately) for adjustable control. (Separate 12V wiring is required to power the illumination.) For optimal performance, we recommend using the JL Audio MLC-RW (Marine Lighting Controller).



Integrated LED Lighting  
Available on Sport grille models





# M3

## Subwoofer Drivers




### POSITION:

High-performance audio, specifically engineered for marine duty

Subwoofer Drivers:

**NEW! M3-101B:**

10-inch infinite baffle subwoofer, 175W, 4 ohms

|   |  |
|---|--|
|   |  |
| Sport - White   | Sport - Gunmetal   |
|  |  |
| Classic - White   |  |

### SELLING POINTS:

#### #1 Truly engineered for marine duty

- To ensure long-term performance, all models are designed and built to exceed industry standards for salt-fog and UV exposure. These are salt-water rated products that you can use with confidence.

#### #2 Outstanding sound quality

- All models are designed to operate in open-air boat environments, delivering powerful, smooth sound that is several steps beyond common marine speakers. These are not car speakers painted white, they are acoustically engineered for boat installations.
- Engineered to operate without a dedicated enclosure.

#### #3 Versatile power requirements

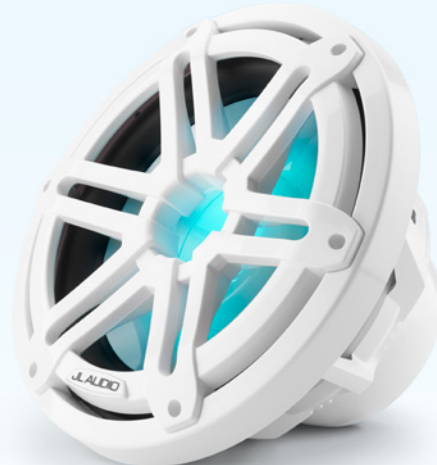
- Suitable for use with standard marine head-unit power
- Designed to benefit from operation with quality amplification, such as the JL Audio marine amplifiers.

#### #4 Three great looks to choose from!

- Available in two grille styles: "Classic" or "Sport", both in Gloss White. Sport models are also available in a sleek, all Gunmetal finish.
- Allows you to match the look of the speakers to the theme of the boat interior and the customer's tastes.

#### #5 Built-In RGB LED Lighting (Optional Feature)

- Available on Sport grille models, multi-color LEDs are embedded within each speaker grille to produce vibrant accent lighting.
- Choose from seven fixed-wiring lighting colors or connect a lighting controller accessory (sold separately) for adjustable control. (Separate 12V wiring is required to power the illumination.) For optimal performance, we recommend using the JL Audio MLC-RW (Marine Lighting Controller).



### TECHNOLOGIES

**MARINE**  
TESTED DESIGN



Built-In LED Lighting  
Available on Sport grille models





# M3 ETXv3

## Enclosed Systems

### POSITION:

High-performance enclosed speaker performance for small and large vessels.



Enclosed Coaxial Systems:

**NEW! M3-770ETXv3:**

7.7-inch enclosed tower coaxial system, 70W, 4 ohms



**Application-Specific Fixtures (Sold separately) -**

Refer to ETXv3 Mounting Fixtures Guide



**Optional Protective Cover**  
(sold separately)

### TECHNOLOGIES

**MARINE**  
TESTED DESIGN



### SELLING POINTS:

#### #1 Big Speaker Sound and Stunning Looks

- Oversized 7.7-inch coaxials deliver stronger output and better power handling than smaller speakers.
- Available in all-white, with two grille styles (Sport or Classic) or satin black, with gunmetal grilles.

#### #2 High-Performance Coaxial Drivers

- High-Performance M3-Series 7.7-inch coaxial speakers for moderate power, standard output applications.

#### #3 Top-Quality, Salt-Water-Grade Materials

- Injection-molded, marine-grade polymer enclosure is designed to withstand a real salt-water environment for years of high-performance operation.
- Mounting fixtures are salt-water-grade, machined aluminum
- Deck-mount fixtures are made from cast 316 Stainless Steel

#### #4 Flexible Mounting Options

- Pipe mounting fixtures (fixed and swivel) are available for the most popular pipe diameters.
- Deck/Surface mount fixture with ratchet-adjustable pitch is also available.
- The speaker and rear decorative JL Audio logo cap can be adjusted to compensate for different mounting roll angles.

#### #5 Built-In RGB LED Lighting (Optional Feature)

- Available on Sport grille models, multi-color LEDs are embedded within each speaker grille to produce vibrant accent lighting.
- Choose from seven fixed-wiring lighting colors or connect a lighting controller accessory (sold separately) for adjustable control. (Separate 12V wiring is required to power the illumination.) For optimal performance, we recommend using the JL Audio MLC-RW (Marine Lighting Controller).



Built-In LED Lighting  
Available on Sport grille models

